



MX520 Series

Reliability. Security. Productivity.



MX522adhe with optional trays



This is a Class A device according to the FCC Rules and international electromagnetic emissions standards. This device is not intended for use in residential or domestic environments due to potential interference to radio communications.

Lexmark MX520 Series

Mid-size workgroups can work fast and still run economically with the MX520 Series, the up-to 44 page-per-minute* multifunction product with long-life components that rarely need replacement. A multi-core processor joins up to 2 GB of memory and Hard Drive (MX522) to power through big jobs, while a durable design keeps things moving.



Get more done

- ▶ Print, copy and scan (plus fax****) with the power of a multi-core processor and up to 2 GB of memory (MX522).
- ▶ Get up to 44-page-per-minute printing and scan up to 84 images per minute.
- ▶ Intuitive 10 cm colour touch screen offers smooth, tablet-like interaction.
- ▶ Built-in productivity apps save time and improve efficiency. (MX522)
- ▶ Hard drive (standard on MX522) enhances overall performance.

Ready when you are

- ▶ Long-life fuser and imaging components extend uptime.
- ▶ Unison™ Toner replacement cartridges deliver up to 25,000 pages** of high-quality printing.
- ▶ Maximum input capacity of 2000 pages means fewer interruptions.
- ▶ Durable metal frame is designed for longevity.

Robust, built-in security

- ▶ Lexmark's full-spectrum security architecture helps keep your information safe—on the document, the device, over the network, and everywhere in between.
- ▶ A range of embedded features harden device against attacks.
- ▶ Go beyond standard Confidential Print with optional security solutions like Print Release and Lexmark Secure Document Monitor (available as an option on MX522).
- ▶ Keypoint Intelligence - Buyers Lab honoured Lexmark with a prestigious BLI PaceSetter award for Document Imaging Security***.



Built for planet earth

- ▶ Energy management features reduce power consumption in active use or sleep mode.
- ▶ Standard two-sided printing saves paper.
- ▶ Use of post-consumer recycled content in manufacturing saves natural resources.
- ▶ Device is rated EPEAT® Silver and ENERGY STAR® certified.
- ▶ Recycle cartridges through the award-winning Lexmark Cartridge Collection Program (LCCP).

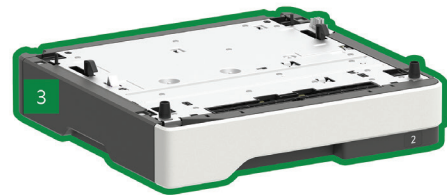
*Print and copy speeds measured in accordance with ISO/IEC 24734 and ISO/IEC 24735 respectively (ESAT). For more information see: www.lexmark.com/ISOspeeds.

**Average standard page yield value declared in accordance with ISO/IEC 19752.

***Award based on North America and/or Western Europe data

****All models are cloud fax ready. Some models include an analog fax modem. See lexmark.com for details.

Lexmark MX520 Series



- 1 **MX520 Series with 10.9 cm colour touch screen**
18.8 x 19.3 x 16.9 inches
477 x 489 x 429.5 mm
- 2 **550-sheet tray**
5 x 15.7 x 14.7 inches
126 x 389 x 374 mm

- 3 **250-sheet tray**
3.7 x 15.7 x 14.7 inches
95 x 389 x 374 mm

■ Standard

■ Optional

Supports up to three optional trays.

© 2021 Lexmark. All rights reserved.

Lexmark, the Lexmark logo and Unison are trademarks of Lexmark International, Inc., registered in the United States and/or other countries. AirPrint and the AirPrint Logo are trademarks of Apple, Inc. ENERGY STAR® is a U.S. registered mark. EPEAT® is a trademark of EPEAT, Inc. in the United States and other countries. MOPRIA®, the Mopria® Logo™ and the Mopria® Alliance logos are trademarks, service marks, and certification marks of Mopria Alliance, Inc. in the United States and other countries. All other trademarks are the property of their respective owners.

This product includes software developed by the OpenSSL Project for use in the Open SSL Toolkit (<http://www.openssl.org/>).

Product specifications	Lexmark MX521de	Lexmark MX521ade	Lexmark MX522adhe	Lexmark MX522dhe
Print				
Display	Lexmark e-Task 4.3-inch (10.9 cm) colour touch screen			
Print Speed: Up to ⁶	Black: 44 ppm			
Time to First Page: As fast as	Black: 6 seconds			
Print Resolution	Black: 1200 IQ (1200 x 600 dpi), 1200 x 1200 dpi, 2400 IQ (2400 x 600 dpi), 600 x 600 dpi			
Memory	Standard: 1024 MB / Maximum: 1024 MB		Standard: 2048 MB / Maximum: 2048 MB	
Hard Disk	Not Available		Included in configuration	
Recommended Monthly Page Volume ²	2,000 - 15,000 pages		2000 - 15000 pages	
Maximum Monthly Duty Cycle: Up to ³	120,000 pages per month		120000 pages per month	
Copy				
Copy Speed: Up to ⁶	Black: 44 cpm			
Time to First Copy: as fast as	Black: 6 seconds			
Scan				
Scanner Type / ADF Scan	Flatbed scanner with ADF / RADF (reversing Duplex)		Flatbed scanner with ADF / DADF (single pass Duplex)	
A4/Ltr Duplex Scan Speed: Up to	Black: 20 / 20 sides per minute / Colour: 10.5 / 10.5 sides per minute		Black: 84 / 90 sides per minute / Colour: 44 / 48 sides per minute	
A4/Ltr Simplex Scan Speed: Up to	Black: 42 / 45 sides per minute / Colour: 20 / 22 sides per minute		Black: 42 / 45 sides per minute / Colour: 22 / 24 sides per minute	
ADF Paper Input Capacity: Up to	50 pages 75 gsm bond			
Fax				
Modem Speed	N/A Kbps	ITU T.30, V.34 Half-Duplex, 33.6 Kbps		
Supplies⁷				
Laser Cartridge Yields (up to) ¹	6,000-page Cartridge, 15,000-page High Yield Cartridge, 20,000-page Extra High Yield Cartridge, 25,000-page Ultra High Yield Cartridge			
Imaging Unit Estimated Yield: Up to	60000 pages, based on 3 average letter/A4-size pages per print job and ~ 5% coverage			
Cartridge(s) Shipping with Product ¹	6,000-page Return Program Toner Cartridge			
Paper Handling				
Included Paper Handling	250-Sheet Input, 100-Sheet Multipurpose Feeder, 150-Sheet Output Bin, Integrated Duplex			
Optional Paper Handling	250-Sheet Tray, 550-Sheet Tray, 550-Sheet Lockable Tray			
Paper Input Capacity: Up to	Standard: 350 pages 75 gsm bond / Maximum: 2000 pages 75 gsm bond			
Paper Output Capacity: Up to	Standard: 150 pages 75 gsm bond / Maximum: 150 pages 75 gsm bond			
Media Types Supported	Card Stock, Envelopes, Paper Labels, Plain Paper, Transparencies, Refer to the Paper & Specialty Media Guide			
Media Sizes Supported	10 Envelope, 7 3/4 Envelope, 9 Envelope, A4, A5, DL Envelope, Executive, Folio, JIS-B5, Legal, Letter, Statement, Universal, Oficio, A6			
General Information⁴				
Standard Connectivity	One Internal Card Slot, USB 2.0 Specification Hi-Speed Certified (Type B), Gigabit Ethernet (10/100/1000), Front USB 2.0 Specification Hi-Speed Certified port (Type A)		One Internal Card Slot, USB 2.0 Specification Hi-Speed Certified (Type B), Gigabit Ethernet (10/100/1000), Front USB 2.0 Specification Hi-Speed Certified port (Type A), Rear USB 2.0 Specification Hi-Speed Certified port (Type A)	
Optional Network Ports / Optional Local Ports	Marknet N8372 WiFi Option / Internal RS-232C serial, Internal 1284-B Bidirectional Parallel			
Noise Level: Operating	Print: 56 dBA / Copy: 56 dBA / Scan: 55 dBA			
Specified Operating Environment	Humidity: 8 to 80% Relative Humidity, Temperature: 10 to 32°C (50 to 90°F), Altitude: 0 - 5000 Meters (16,404 Feet)			
Product Guarantee	1-Year Onsite Service, Next Business Day			
Size (mm - H x W x D) / Weight	477 x 489 x 429.5 mm / 20.6 kg			

All information in this brochure is subject to change without notice. Lexmark is not liable for any errors or omissions.

This is a Class A device according to the FCC Rules and international electromagnetic emissions standards. This device is not intended for use in residential or domestic environments due to potential interference to radio communications.

¹Average standard page yield value declared in accordance with ISO/IEC 19752. ²"Recommended Monthly Page Volume" is a range of pages that helps customers evaluate Lexmark's product offerings based on the average number of pages customers plan to print on the device each month. Lexmark recommends that the number of pages per month be within the stated range for optimum device performance, based on factors including: supplies replacement intervals, paper loading intervals, speed, and typical customer usage. ³"Maximum Monthly Duty Cycle" is defined as the maximum number of pages a device could deliver in a month using a multishift operation. This metric provides a comparison of robustness in relation to other Lexmark printers and MFPs. ⁴Printers are sold subject to certain license/agreement conditions. See www.lexmark.com/printerlicense for details. ⁵Actual Yield may vary based on other factors such as device speed, paper size and feed orientation, toner coverage, tray source, percentage of black-only printing and average print job complexity. ⁶Print and copy speeds measured in accordance with ISO/IEC 24734 and ISO/IEC 24735 respectively (ESAT). For more information see: www.lexmark.com/ISOspeeds. ⁷Product functions only with replacement cartridges designed for use in a specific geographical region. See www.lexmark.com/regions for more details.